

DEVELOPMENT REFERENCE MAP

Douglas County, Colorado

as of September 4th, 2024

Legend

- Subdivisions
- 35 Acre Developments
- Exemptions
- Rural Site Plans
- Divisions without Subdivision Process Parcels
- Other Zoning not Subdivided
- Land Zoned Agricultural One
- County Open Space Within Incorporated Areas
- Open Space
- Parks
- Pike National Forest
- Parcels
- Sections
- Townships
- County Boundary
- ▲ Peaks
- Airport
- Lakes

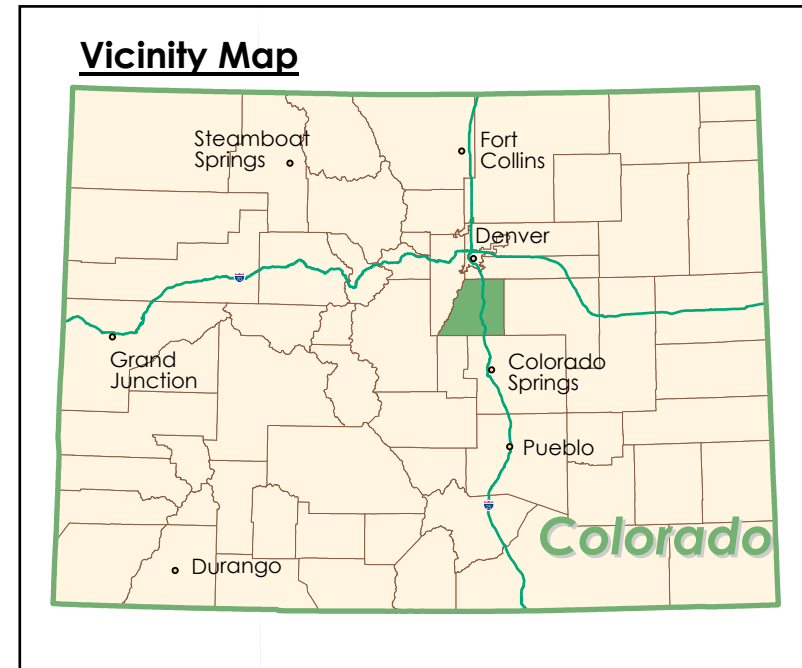
- AURORA
- CASTLE PINES
- CASTLE ROCK
- LARKSPUR
- LITTLETON
- LONE TREE
- PARKER

Roads

- Interstate
- US Highway
- State Highway
- Toll Highway
- Major Road
- Local Road
- Private
- Forest Road
- Platted Not Built
- Gated Community
- Access Easement
- Entrance/Exit Ramp



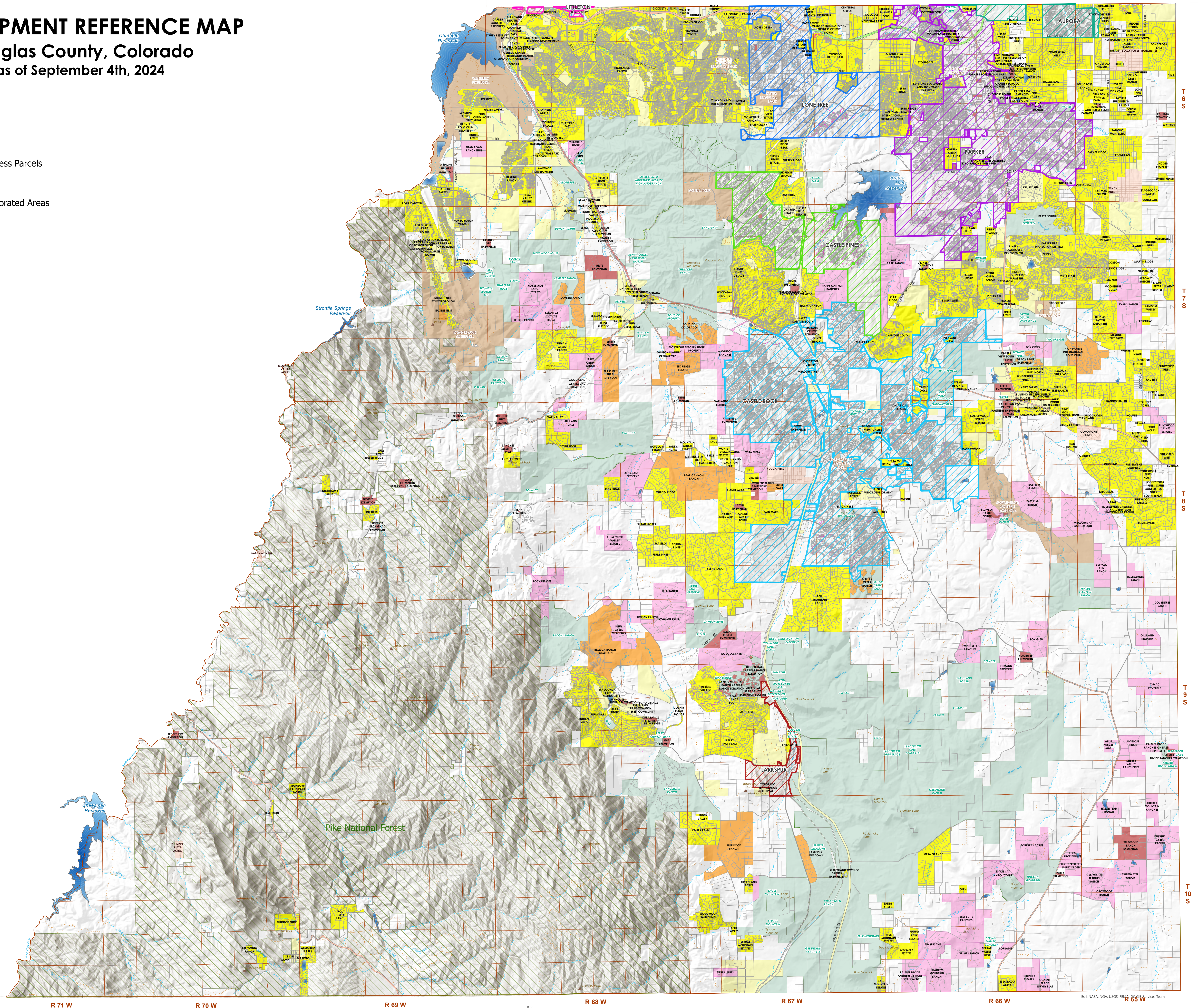
Scale in Miles



DISCLAIMER: All data and information ("Products") contained herein are for informational purposes only. Although such Products are believed to be accurate as of the date of printing, Douglas County does not warrant that such Products are error free. Douglas County provides these Products on an "as is" basis without warranties of any kind, either express or implied, including, but not limited to, warranties of title or implied warranties of merchantability or fitness for a particular purpose. Douglas County shall not be liable for any direct, indirect, incidental, special or consequential damages arising out of the use of such Products, or the inability to use such Products or out of any breach of any warranty. This use acknowledges and agrees that the use of such Products is at the sole risk of the user.

General questions about this or any other Douglas County GIS products, including errors, omissions, corrections and/or updates should be directed to the Douglas County GIS Services at (303) 660-7445.

Douglas County GIS Services
Wilson Bldg, 301 Wilson St.
Castle Rock, Colorado 80044



R 71 W R 70 W R 69 W R 68 W R 67 W R 66 W R 65 W

T 6 S
T 7 S
T 8 S
T 9 S
T 10 S